

Lugged Pattern Double Offset Class 150

- Class 150
- Available in Stainless or Carbon Steel bodies
- Stainless Steel disc
- PTFE or Graphite Stem Seals
- Glass filled TFM 1700 Seat
- Fire safe design
- ISO mount flange with recessed packing gland
- Extended neck to allow for Pipe insulation
- Postive cast position stop

Pressure/Temperature Rating

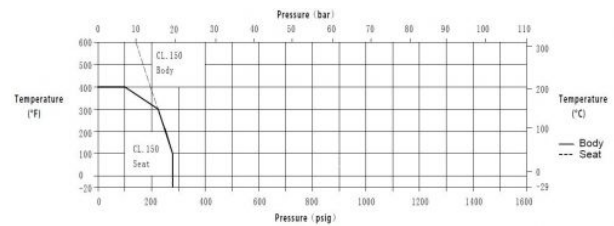
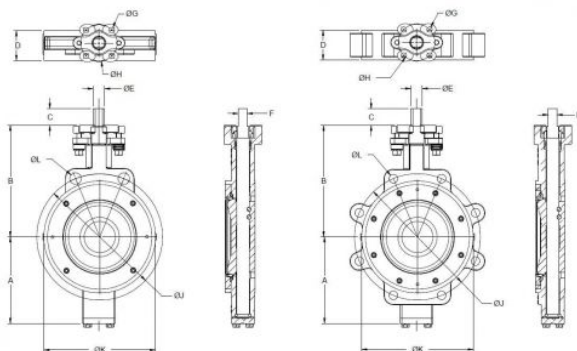
Class 150

Carbon Steel -20oF to 400oF

285PSIG at 100oF

Stainless Steel -20oF to 400oF

275 PSIG at 100oF



Materials

Part	Material
Anti-Extrusion Ring	Stainless Steel 316
Body	A351-CF8MA216-WCB
Disc	A351-CF8M
Lower Bearing	Stainless Steel 316/PTFE
Packing Gland	Stainless Steel 316
Seat	Glass Filled TFM 1700
Seat Retainer	A351-CF8M /A216-WCB
Spacer	PTFE
Stem	17-4PH
Stem Seal	PTFE
Thrust Ring	Stainless Steel 316
Upper Bearing	Stainless Steel 316/PTFE

Dimensions & Weights

Valve Size (inch)	2	2 1/2	3	4	5	6	8	10	12	14	16	18	20	24
Valve Size (mm)	50	65	80	100	125	150	200	250	300	350	400	450	500	600
A (mm)	92	103	111	122	143	165	182	214	260	300	338	376	400	473
B (mm)	135	147	157	179	193	214	241	276	312	338	390	425	451	528
C (mm)	28	28	28	33	33	32	33	55	55	665	81	80	111	111
D (mm)	44	47	49	55	57	57	65	71	82	92	103	114	127	155
E (mm)	13	15	15	19	23	23	26	28	36	43	51	51	60	65
F (mm)	9	11	11	14	17	17	19	-	-	-	-	-	-	-
KEY (J)	-	-	-	-	-	-	-	8	10	12	13	13	16	20
G (mm)	11	11	11	11	11	11	14	14	14	19	22	22	22	19
H (mm)	71	71	71	71	71	71	125	125	125	141	165	165	165	254
J (mm)	121	140	153	191	216	242	299	362	432	477	540	578	635	750
K (mm)	104	120	125	155	184	214	268	322	379	410	468	532	584	692

Fareham

01329 283 425

valvestock.enquiries@wolseley.co.uk